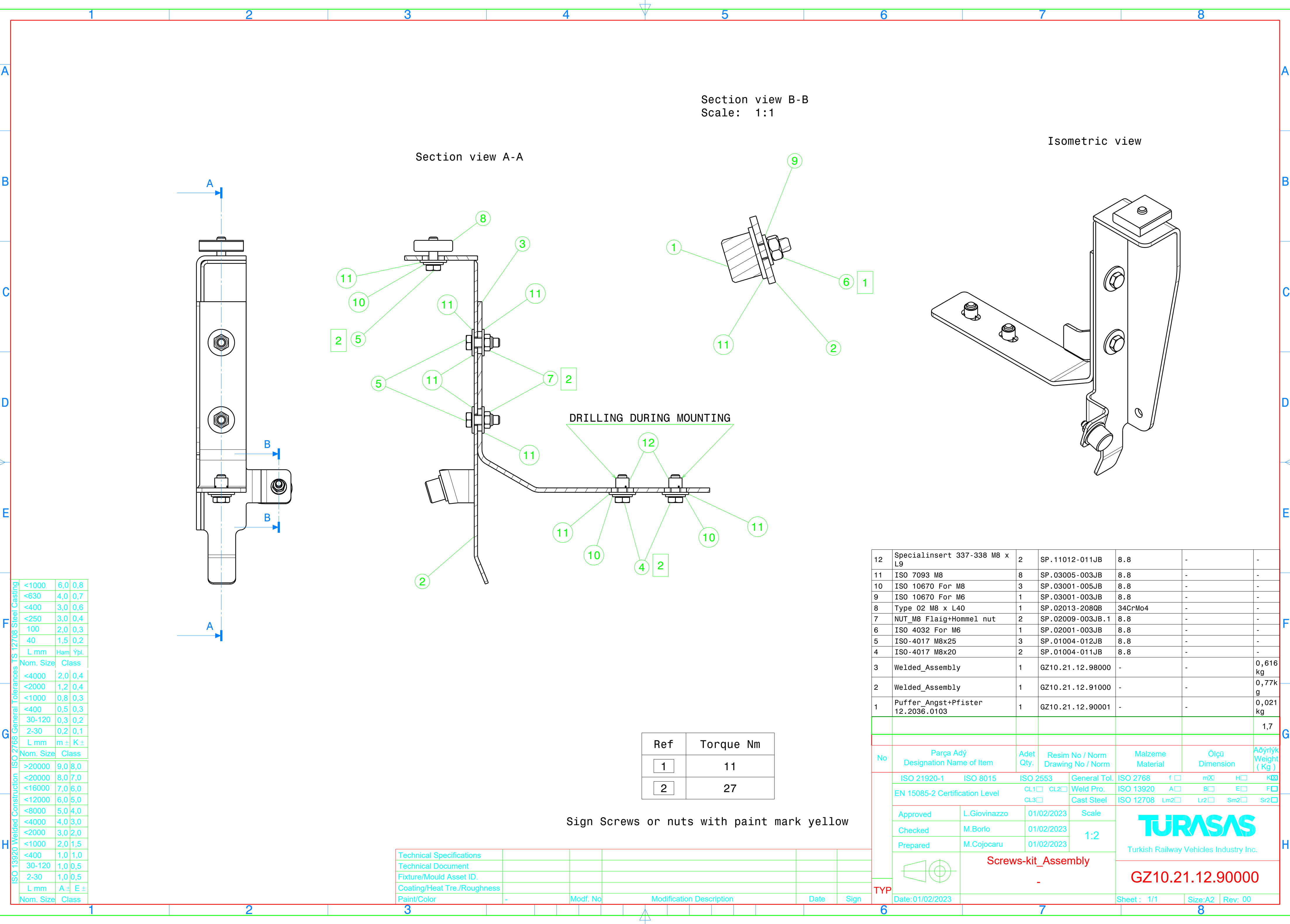


Reproduction, dissemination or use of this document or its contents in any form without the prior written permission of TURASAS, is prohibited. Offenders will be liable for the payment of damages. All rights reserved in the event of the grant of a patent, utility model or ornamental design registration.



F	ISO 13920 Steel Casting		
	<1000	6,0	0,8
G	<630	4,0	0,7
	<400	3,0	0,6
H	<250	3,0	0,4
	100	2,0	0,3
	40	1,5	0,2
	L mm	Ham	Ypl.
	Nom. Size	Class	
	<4000	2,0	0,4
	<2000	1,2	0,4
	<1000	0,8	0,3
	<400	0,5	0,3
	30-120	0,3	0,2
	2-30	0,2	0,1
	L mm	m ±	K ±
	Nom. Size	Class	
	>20000	9,0	8,0
	<20000	8,0	7,0
	<16000	7,0	6,0
	<12000	6,0	5,0
	<8000	5,0	4,0
	<4000	4,0	3,0
	<2000	3,0	2,0
	<1000	2,0	1,5
	<400	1,0	1,0
	30-120	1,0	0,5
	2-30	1,0	0,5
	L mm	A ±	E ±
	Nom. Size	Class	

Ref	Torque Nm
1	11
2	27

Sign Screws or nuts with paint mark yellow

Technical Specifications					
Technical Document					
Fixture/Mould Asset ID.					
Coating/Heat Tre./Roughness					
Paint/Color	-	Mod. No	Modification Description	Date	Sign

12	Specialinsert 337-338 M8 x L9	2	SP.11012-011JB	8.8	-	-
11	ISO 7093 M8	8	SP.03005-003JB	8.8	-	-
10	ISO 10670 For M8	3	SP.03001-005JB	8.8	-	-
9	ISO 10670 For M6	1	SP.03001-003JB	8.8	-	-
8	Type 02 M8 x L40	1	SP.02013-2080B	34CrMo4	-	-
7	NUT_M8 Flaig+Hommel nut	2	SP.02009-003JB.1	8.8	-	-
6	ISO 4032 For M6	1	SP.02001-003JB	8.8	-	-
5	ISO-4017 M8x25	3	SP.01004-012JB	8.8	-	-
4	ISO-4017 M8x20	2	SP.01004-011JB	8.8	-	-
3	Welded_Assembly	1	GZ10.21.12.98000	-	-	0,616 kg
2	Welded_Assembly	1	GZ10.21.12.91000	-	-	0,77kg
1	Puffer_Angst+Pfister 12.2036.0103	1	GZ10.21.12.90001	-	-	0,021 kg
						1,7
No	Parça Adý Designation Name of Item	Adet Qty.	Resim No / Norm Drawing No / Norm	Malzeme Material	Ölçü Dimension	Ağırlık Weight ( Kg )
	ISO 21920-1	ISO 8015	ISO 2553	General Tol.	ISO 2768	f <input type="checkbox"/> mX <input type="checkbox"/> H <input type="checkbox"/> K <input type="checkbox"/>
	EN 15085-2 Certification Level		CL1 <input type="checkbox"/> CL2 <input type="checkbox"/> CL3 <input type="checkbox"/>	Weld Pro.	ISO 13920	A <input type="checkbox"/> B <input type="checkbox"/> E <input type="checkbox"/> F <input type="checkbox"/>
	Approved	L.Giovinazzo	01/02/2023	Cast Steel	ISO 12708	Lm2 <input type="checkbox"/> Lr2 <input type="checkbox"/> Sm2 <input type="checkbox"/> Sr2 <input type="checkbox"/>
	Checked	M.Borio	01/02/2023	1:2	<div>TURASAS</div>	Turkish Railway Vehicles Industry Inc.
	Prepared	M.Cojocar	01/02/2023			
	Screws-kit_Assembly			GZ10.21.12.90000		
	-					
TYP	Date:01/02/2023			Sheet : 1/1	Size:A2	Rev: 00